

# HV-204



204V

Nominal Voltage

20.4kWh

Capacity

100Ah

Rated Capacity

## FEATURES

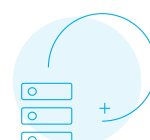
- + Smart BMU
- + Built-in Cloudlink for 24/7 monitoring
- + Optional proactive monitoring service
- + Innovative modular design for ease of transport and installation
- + Intelligent touch screen
- + Firmware updates over the internet
- + 1C high-performance ESS
- + High cycle & service life
- + Easy rackmount system modules
- + 10 packs of 16 cell LiFePO4 battery system
- + Compatible with most high voltage inverters
- + CAN Bus, fully integrates and communicates with leading Inverter brands
- + Parallel up to 8 ESS Systems per string with full communications



MONITORING  
INCLUDED



EASY  
INSTALLATION



SCALABLE



SAFE +  
RELIABLE

Item	Specifications
Model	Hubble HV-204
*Rated Capacity (5HR)	100 Ah
Nominal Voltage	204 V
Discharge Cutoff Voltage	179 V
Equalized Charge Voltage	223 V
Max. Continuous Charging Current	100 A
Max. Continuous Discharging Current	100 A
C Rating	1.0 C
Depth of Discharge	100%
Weight	Approx. 230 Kg without cabinet
Monitoring	Built-in Wi-Fi enabled cloud monitoring
Parallel	Parallel connection up to 8 ESS systems with full communications
Dimensions (WxDxH) mm	Standard 22U cabinet dimensions: 693mm x 1102mm x 1200mm
Ports	1 x CAN-bus, 2 x Battery Link Ports
Cells	16 cells per pack. 64 cells total. New Li-ion prismatic LiFePO4 cells
Design Life	+/- 15 Years
Cycle Life @ 1C	Above 6000 cycles @ 80% DoD, +/- 4000 cycles @ 100% DoD
Certification	CE, UN38.3, GBT31484-2015, GBT31485-2015, GBT31486-2015
Outer Package Material	Black bake lacquer steel case
Operating Temperature	Charging: 0 to +55°C   Discharging: 0 to +55°C   Storage: 0 to +55°C
Protection	Circuit breaker per pack, BMS Voltage Protection, Current Limiting



Built-in Remote  
Monitoring with the  
Hubble Cloudlink



\* Due to continuous product improvements specifications are subject to change without prior notice.