



X-101



48V

Nominal Voltage

5.5kWh

Capacity

116Ah

Rated Capacity

FEATURES

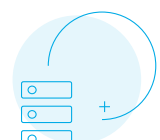
- + Optional remote monitoring with the Hubble Cloudlink
- + 1C high performance lithium battery
- + Advanced BMS with current limiting function
- + Easy wall mount or shelf rack installation
- + Heavy duty side handles for easy handling and mounting on the wall
- + High cycle and service life
- + Compatible with most inverters and chargers
- + Built in protection for over-charge, over-discharge and over-temperature
- + CAN Bus, fully integrates and communicates with leading Inverter brands



OPTIONAL MONITORING



SAFE + RELIABLE



SCALABLE

TECHNICAL DATA

| Item | Specifications |
|-------------------------------------|--------------------------------------------------------------------------|
| Model | Hubble X-101 |
| *Rated Capacity (5HR) | 116 Ah |
| Nominal Voltage | 48 V |
| Design Capacity | 5.5 kWh |
| Equalized Charge Voltage | 53.8 V |
| Max. Continuous Charging Current | 105 A |
| Max. Continuous Discharging Current | 105 A |
| C Rating | 1.0 C |
| Depth of Discharge | 100% |
| Weight | Approx. 42 Kg |
| Monitoring | Optional Cloudlink |
| Parallel | Parallel connection up to 15 packs with full communications |
| Dimensions (WxDxH) mm | 442mm x 495mm x 177.5mm |
| Ports | 1x CAN-bus, 2x Battery Link Ports |
| Cells | New Li-ion Prismatic Cells |
| Design Life | +/- 15 Years |
| Cycle Life @ 1C | +/- 6000 Cycles @ 50% DOD, Above 3000 cycles @ 100% DOD |
| Certification | CE, UN38.3, GBT31484-2015, GBT31485-2015, GBT31486-2015 |
| Outer Package Material | White bake lacquer steel case |
| Operating Temperature | Charging: 0 to +55°C Discharging: -20 to +55°C Storage: -20 to +55°C |
| Protection | Electronic Circuit Breaker, BMS Voltage Protection, Current Limiting |



Optional Remote
Monitoring with the
Hubble Cloudlink



* Due to continuous product improvements specifications are subject to change without prior notice.

** To prolong battery life the recommended charge current is 30A.

*** Ah design capacity nominally is between 110Ah and 120Ah.